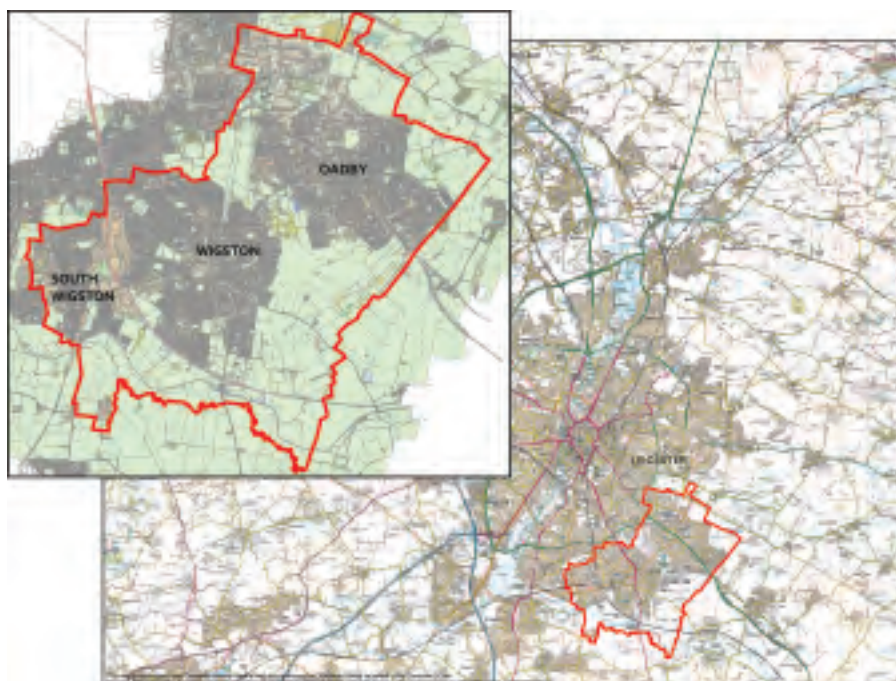


## Chapter 1: Introduction

- 1.1** The Borough of Oadby and Wigston is relatively small, largely urbanised and adjoins the south east corner of Leicester City. All of the Borough's urban areas fall within the Leicester Principal Urban Area. It has a population of some 55,795 and is 2,345 hectares in area, with an average density of 24 people per hectare. The majority of the population reside within the three main urban settlement centres of Oadby, Wigston and South Wigston, which occupy just over 60 per cent of the Borough. There are also a small number of residential properties located within the vicinity of Kilby Bridge which is on the southern edge of the Borough.



### What is the Local Development Framework?

- 1.2** In 2004, the 'planning system' was amended under the Planning and Compulsory Purchase Act. This resulted in Local Plans and Structure Plans being replaced by a 'two tiered' plan led system comprising of Regional Spatial Strategies and Local Development Frameworks. When combined, these determine how the planning system shapes local communities. The Oadby and Wigston Borough Local Development Framework will replace adopted policies in the saved Oadby and Wigston Borough Local Plan as set out in Appendix 3. On the 6th July 2010, Regional Spatial Strategies were formally revoked under Section 79 (6) of the Local Democracy, Economic Development and Construction Act 2009, and no longer form part of the Development Plan for the purposes of Section 38 (6) of the Planning and Compulsory Purchase Act 2004. Although Regional Spatial Strategies have been revoked and will be abolished, the evidence base underpinning them is still a valid consideration.
- 1.3** A Local Development Framework is a 'folder' of documents prepared by district councils, unitary authorities and national park authorities, that outline how spatial planning will be implemented, managed and monitored within the local area.





Figure 1: The Development Plan

## What makes up the Oadby and Wigston Local Development Framework?

1.4 Listed below are the documents that make up the Borough Council's Local Development Framework. More detail on these can be found within the Borough Council's Local Development Scheme.

### Local Development Documents

- Statement of Community Involvement;

### Development Plan Documents

- Core Strategy;
- Allocations;
- Oadby and Wigston Town Centre Masterplans Area Action Plan;



### Supplementary Planning Documents

- Residential Areas;
- Conservation Areas;
- Planning for Renewable Energy Technology and Energy Efficiency;
- Developer Contributions;
- Guidelines for New Development.

### What is the Core Strategy?

- 1.5** The Core Strategy is the foremost Development Plan Document (DPD) within the Local Development Framework. Over time, it will be complemented by other more detailed development plan documents setting out site allocations and general policies to determine planning applications which must all be in conformity with the Core Strategy. Once adopted, these various development plan documents will replace the existing Local Plan Policies.
- 1.6** The Core Strategy sets out the vision, spatial objectives and planning strategy for the Borough up to 2026. The Core Strategy provides the basic principles and policies that will steer built development and the use of land, establishes the overall general scale and location of development, and the approach to the key issues facing the Borough. In summary, the Core Strategy:
- Contains a clear vision from which spatial objectives, strategic policies, monitoring and implementation frameworks will flow;
  - Is linked to the sustainable communities agenda, helping determine the broad location of new housing and employment land necessary to meet the level of local need required within the Borough of Oadby and Wigston; and
  - Is guided by sustainable development principles.
- 1.7** The Core Strategy is consistent with the evidence base of the revoked East Midlands Regional Plan (2009) and national planning policy, as expressed within Planning Policy Guidance, Planning Policy Statements, Circulars and Ministerial statements. It also acts as a key implementation mechanism for the Leicestershire Sustainable Community Strategy and more locally the Oadby and Wigston Sustainable Community Strategy, prepared by the respective Local Strategic Partnerships.

### So what is Spatial Planning?

- 1.8** The importance of spatial planning is recognised internationally and is derived from the need to integrate the complex array of policy documents, territorial strategies, legislative systems and differing cultural approaches across the European Union.





**1.9** The principles of spatial planning are consistent across all levels whether it be concerned with local, regional or national strategies. In Britain, spatial planning can be defined as:

*“Planning that goes beyond traditional land use planning to bring together and integrate policies for the development and use of land with other policies and programmes which influence the nature of places and how they function...This will include policies which can impact on land use by influencing the demands on, or needs for, development, but which are not capable of being delivered solely or mainly through the granting or refusal of planning permission and which may be implemented by other means.”*

(Source: Planning Portal)

