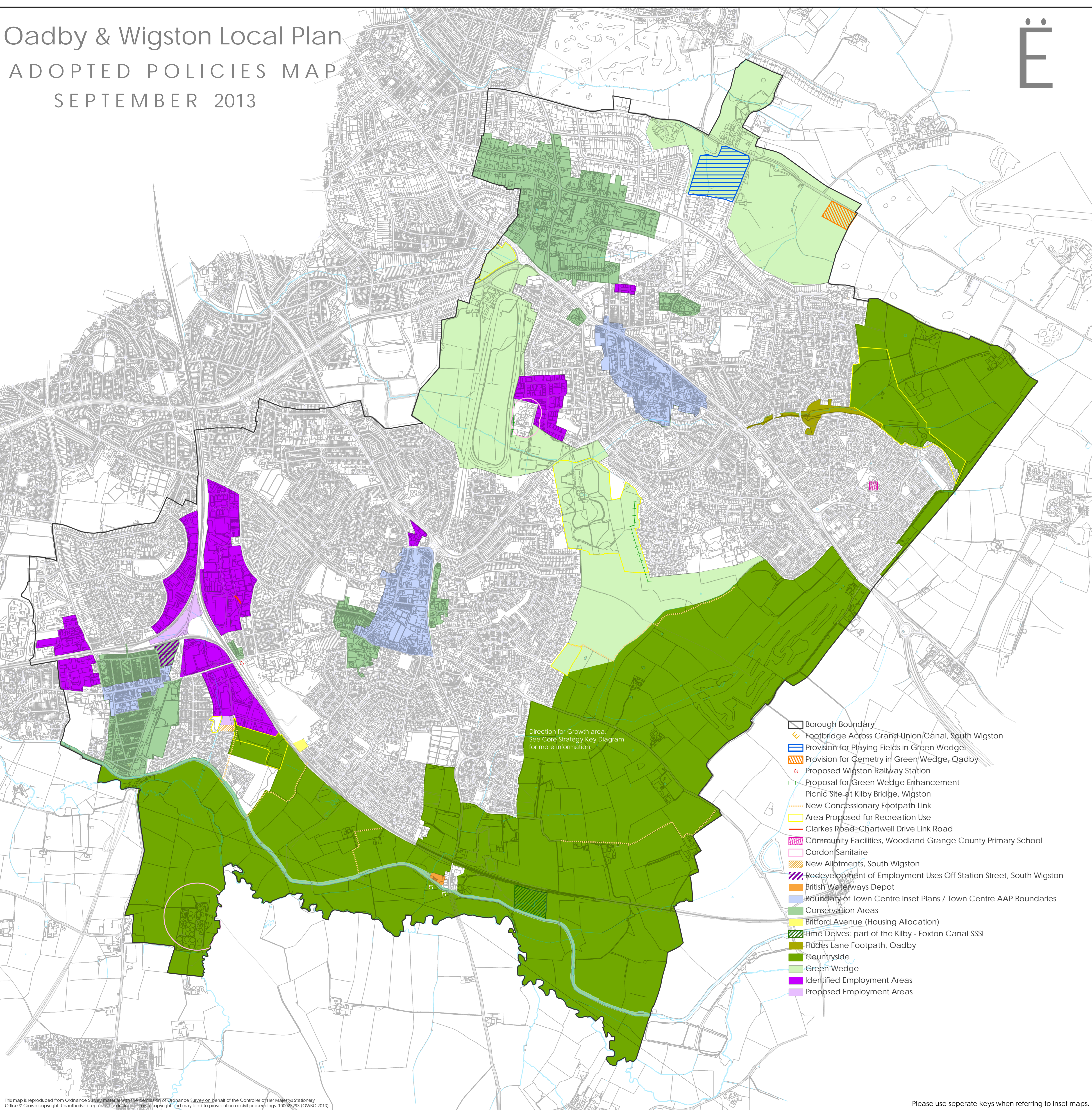


Oadby & Wigston Local Plan

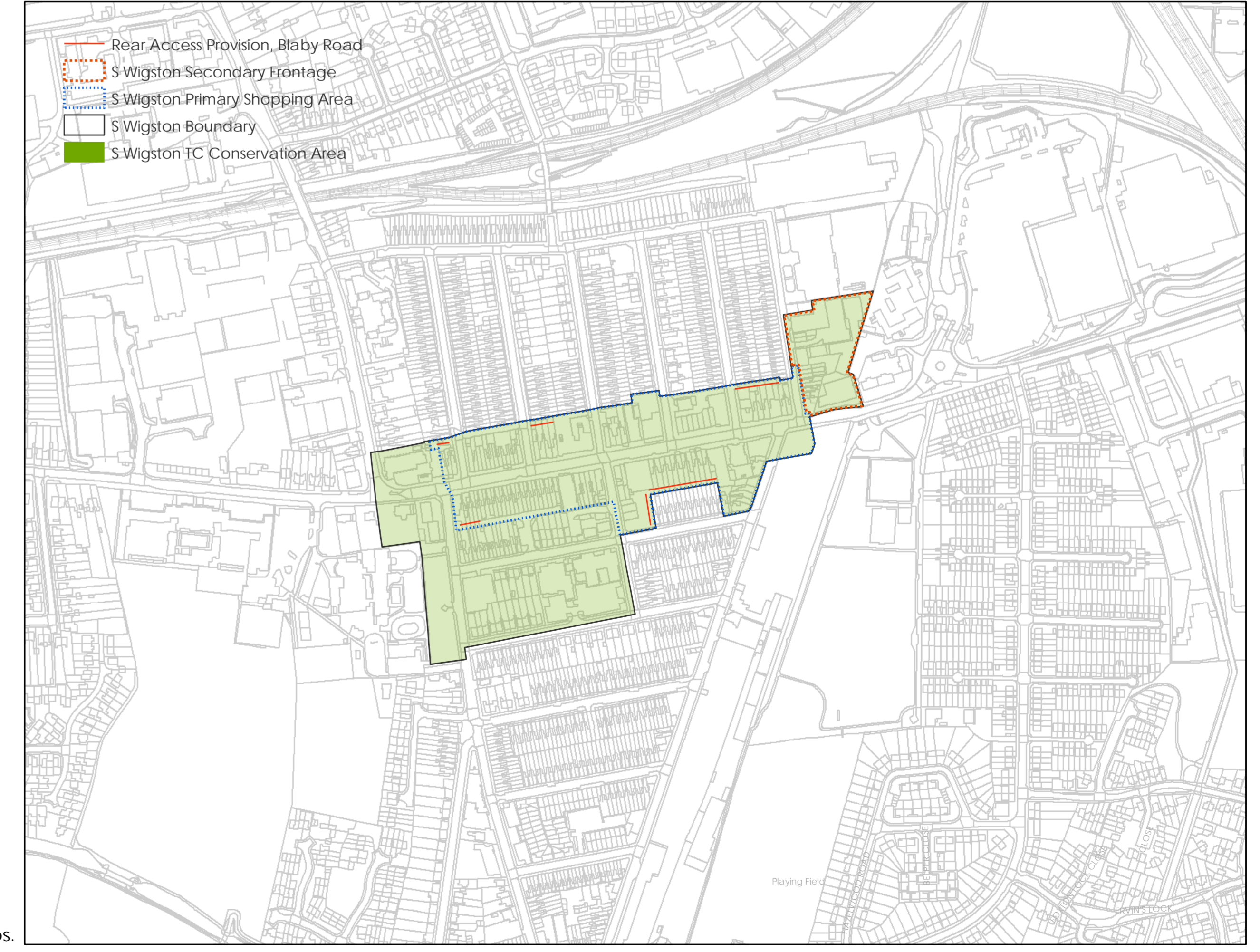
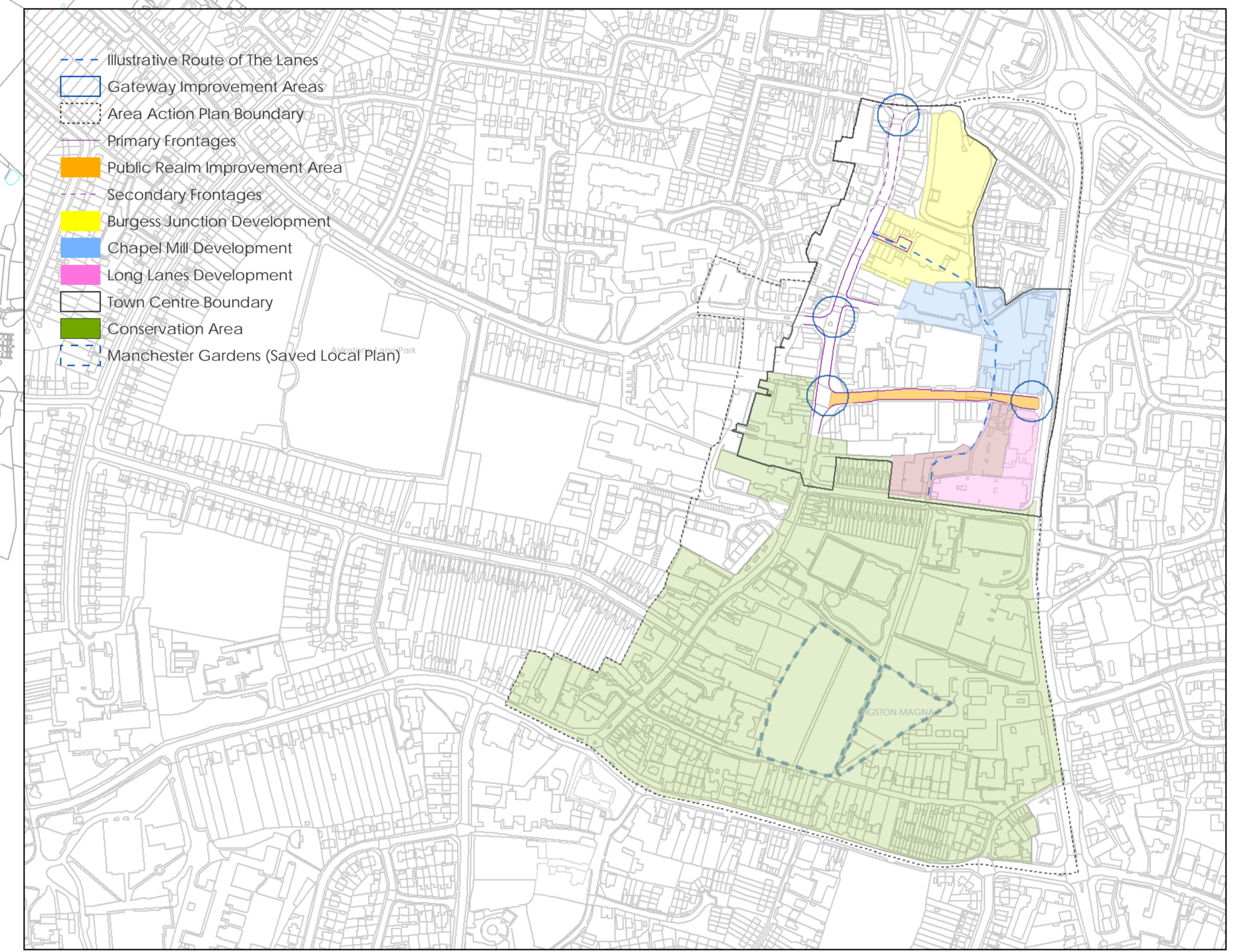
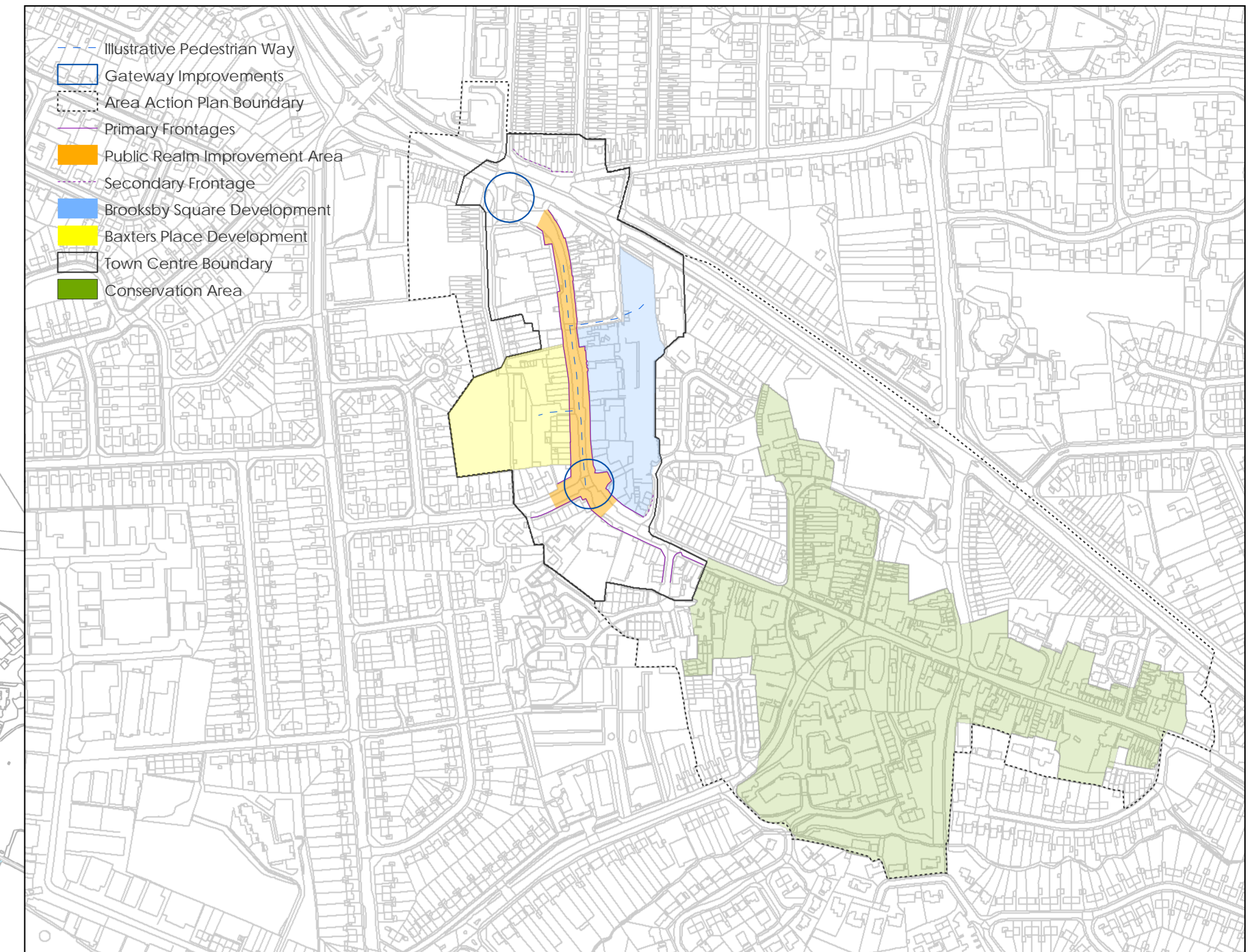
ADOPTED POLICIES MAP

SEPTEMBER 2013



Direction for Growth area.
See Core Strategy Key Diagram
for more information.

- Borough Boundary
- ◇ Footbridge Across Grand Union Canal, South Wigston
- ▨ Provision for Playing Fields in Green Wedge
- ▨ Provision for Cemetery in Green Wedge, Oadby
- Proposed Wigston Railway Station
- Proposal for Green Wedge Enhancement
- Picnic Site at Kilby Bridge, Wigston
- New Concessionary Footpath Link
- ▨ Area Proposed for Recreation Use
- Clarke's Road - Chartwell Drive Link Road
- ▨ Community Facilities, Woodland Grange County Primary School
- ▨ Cordon Sanitaire
- ▨ New Allotments, South Wigston
- ▨ Redevelopment of Employment Uses Off Station Street, South Wigston
- ▨ British Waterways Depot
- ▨ Boundary of Town Centre Inset Plans / Town Centre AAP Boundaries
- ▨ Conservation Areas
- ▨ Britford Avenue (Housing Allocation)
- ▨ Lime Delves: part of the Kilby - Foxton Canal SSSI
- ▨ Fludés Lane Footpath, Oadby
- ▨ Countryside
- ▨ Green Wedge
- ▨ Identified Employment Areas
- ▨ Proposed Employment Areas



This map is reproduced from Ordnance Survey data with the permission of Ordnance Survey on behalf of the Controller of Her Majesty's Stationery Office. © Crown copyright. Unauthorised reproduction is prohibited and may lead to prosecution or civil proceedings. 100023293 (QWBC 2013).

Please use separate keys when referring to inset maps.